



Technical Documents

File Name : Cloud Platform Mobile User
Manual V1.0

File Number: /

Version : V1.0

Executed By Wang Tao

Checked By _____

Countersign By _____

Approved By _____

上海恩阶电子科技有限公司

Shanghai Energy Electronic Technology Co., Ltd.



Modify Records

File Number	Ver.	Drafter/Modifier	Date of Drafting/Modification	Reason for Change	Main Changes
	V1.0	Wang Tao	2025/12/16	/	/

Note 1: This form needs to be filled out every time the archive file is changed

Note 2: When drafting the document for the first time, fill in "none" for "reason for change" and "main change content".



Contents

一、 Introduction	1
1.1 Writing Purpose	1
二、 Install login	2
2.1 App Installation	2
2.2 Registration and Login	3
三、 Function Details	4
3.1 Add Device	4
3.2 Scan to Add	7
3.3 Device Network	7
3.3.1 Distribution Network Entrance	7
四、 Device Monitor	9
五、 My Account	10
5.1 Change password	10
5.2 Log Out	11



一、Introduction

1.1 Writing Purpose

To assist end users in quickly using the Yibang platform, this manual is issued to assist users in quickly mastering the usage of the APP.

二、Install login

The mobile application software used by end users is "SmartValue", and this document is applicable to mobile app users.

2.1 App Installation

Android: Open the mobile app store, search for "SmartValue" and select the corresponding app to download, as shown in Figure 2.1-1

IOS: Open the mobile App Store and search for "SmartValue" to select the corresponding app for download, as shown in Figure 2.1-2

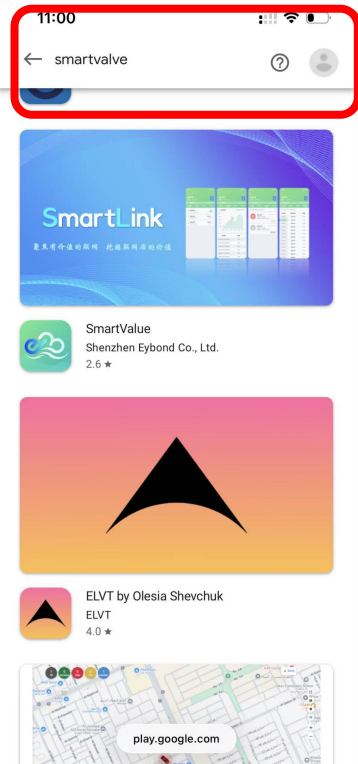


Figure 2.1-1

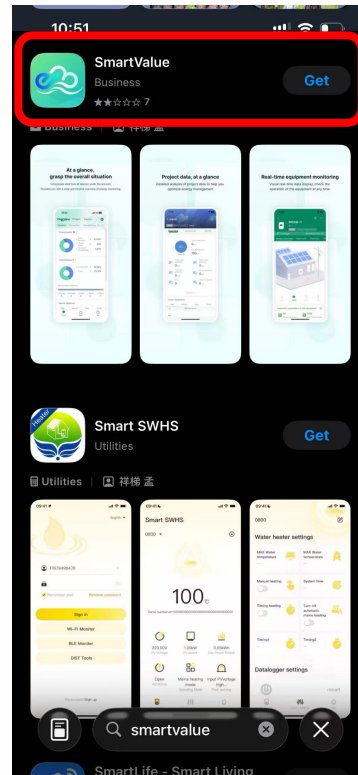


Figure 2.1-2

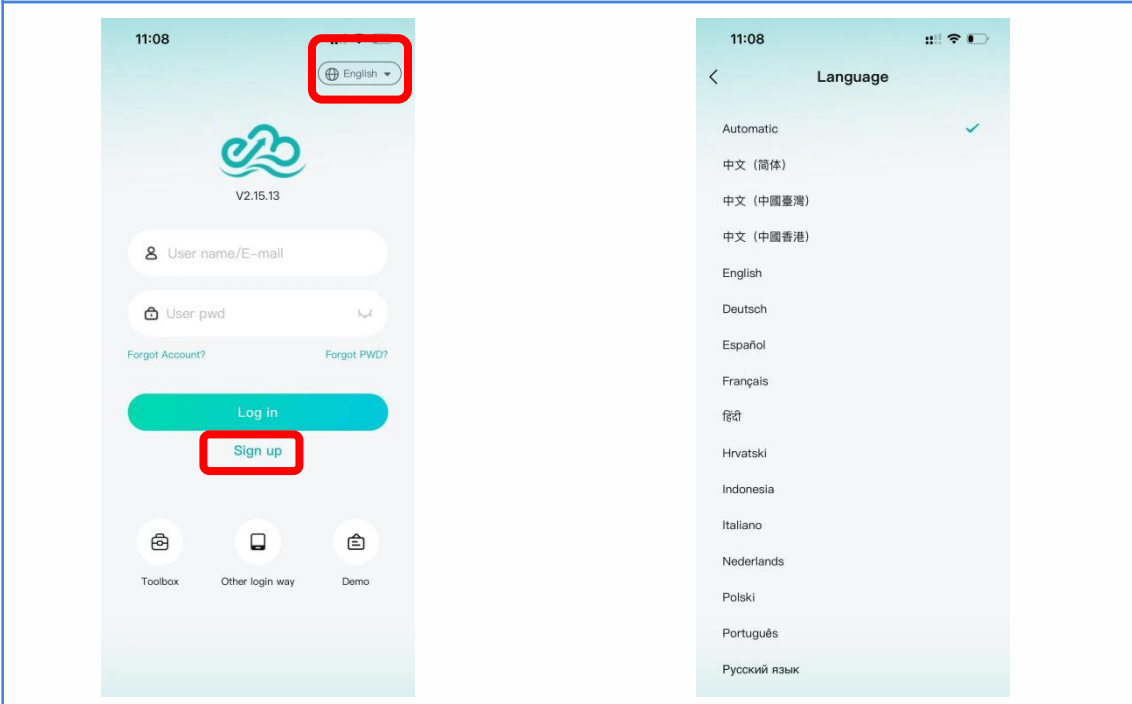
2.2 Registration and Login

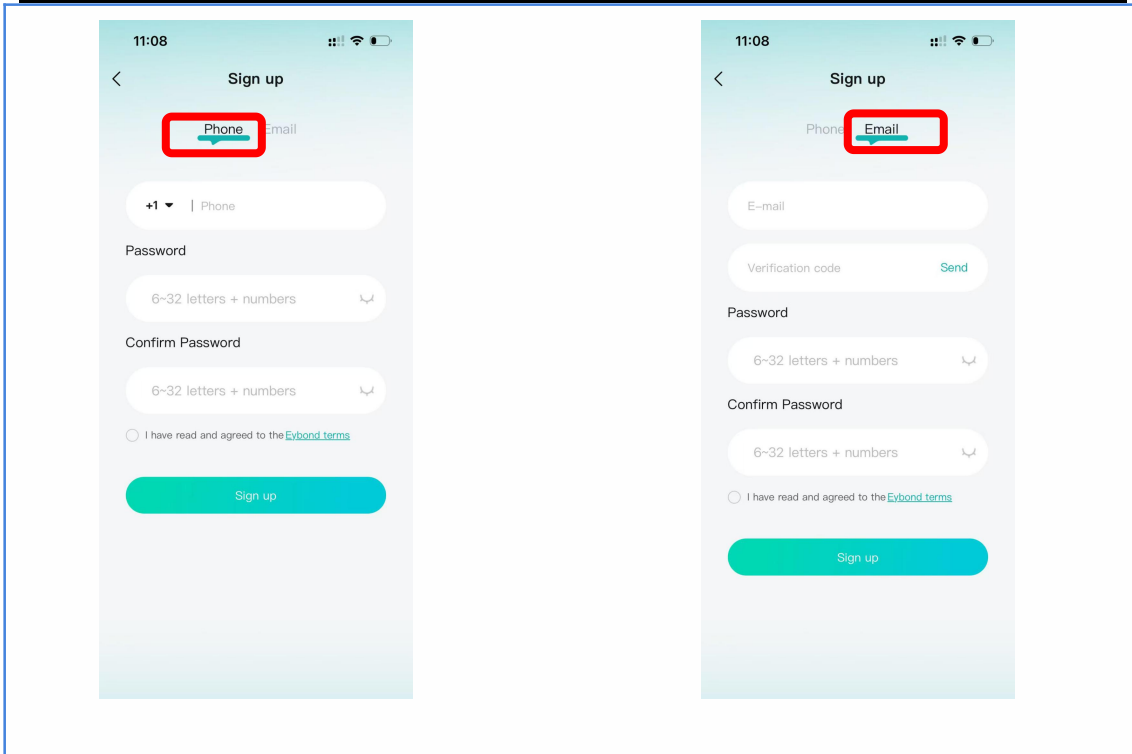
1、Select the local language theme in the upper right corner of the login interface

2、Login and Registration

1)Login: If there is already a corresponding account, simply choose to log in

2)Register: After entering your phone number or email, click on "Get Verification Code", enter the received verification code, set the password, and click "Register Now" to complete the registration.





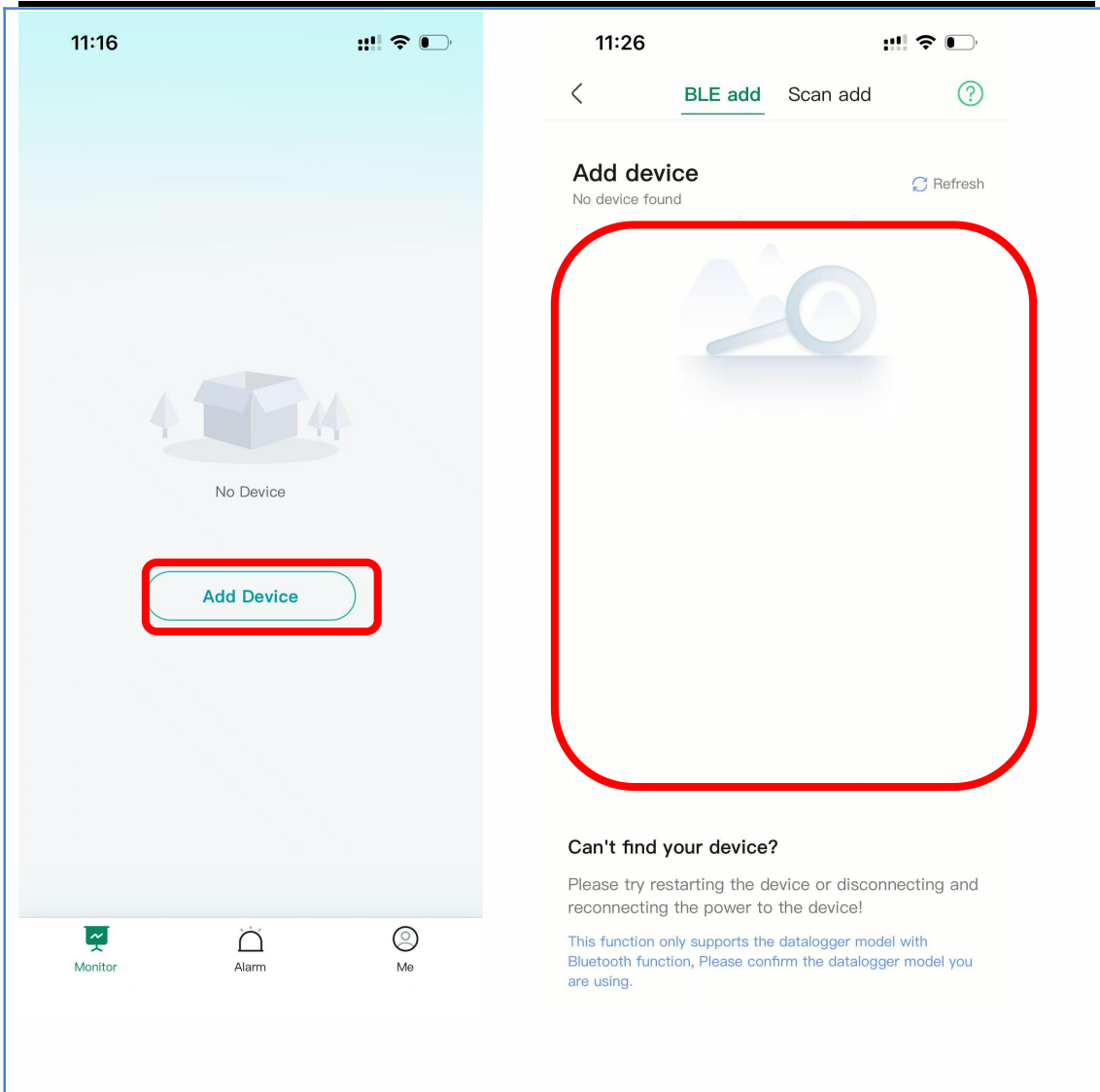
三、Function Details

3.1 Add Device

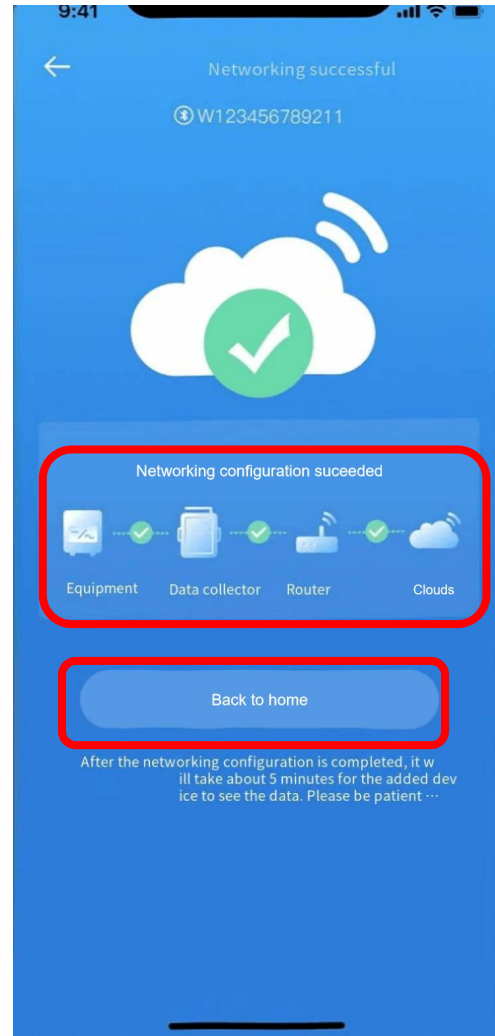
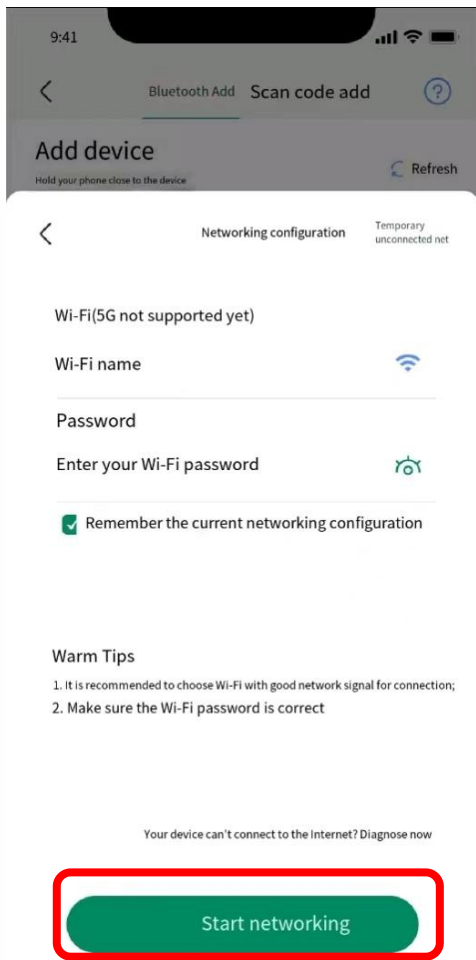
On the "Monitoring" page, click the "+" button in the upper right corner and select "Add Device" to enter the Add Device page. There are two ways to add devices: Bluetooth add and scan code add.

1) Bluetooth addition (only supports devices with Bluetooth module)
When using Bluetooth to add features, the app needs to be allowed to enable Bluetooth and location permissions. If Bluetooth permission is not enabled, nearby Bluetooth devices cannot be searched. And some Android phones require the location system to be turned on before they can be used.

1) After ensuring that the device is powered on, click "Bluetooth Add", select a device with the same name/PN as the device, and click the "+" icon;

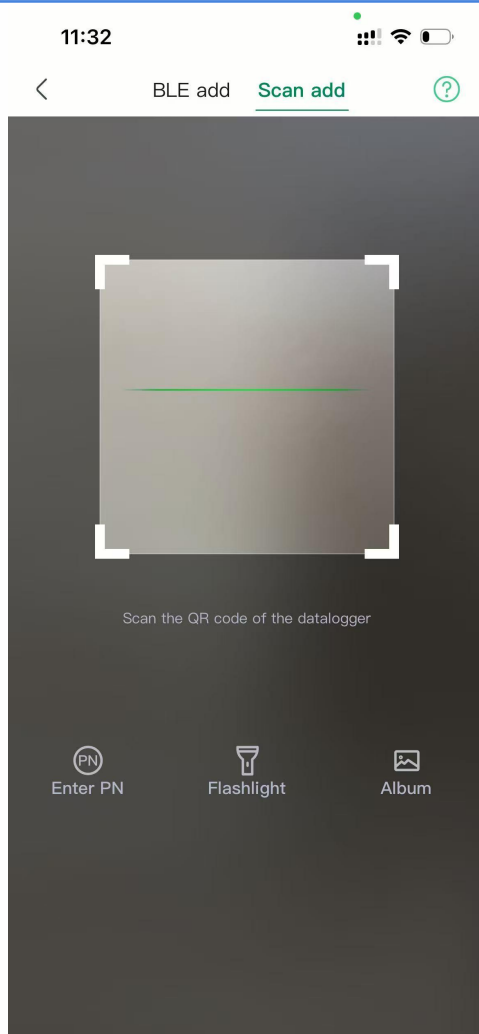


2)After selecting the Wi Fi data acquisition device to add, it will continue to enter the networking interface to configure the network. Select the router to configure and fill in the password. Click the "Start Networking" button to enter the configuration. Wait for 30 seconds, and the APP will provide feedback information based on the distribution network result: if the distribution network is successful, it is considered that the addition is successful. After waiting for about 5-10 minutes, device data can be viewed normally; If the configuration fails, please troubleshoot according to the "Diagnostic Results and Repair Suggestions".



3.2 Scan to Add

1) Click on "Scan add", scan the QR code of the data collector, or click on "Enter PN" in the bottom left corner to complete the device addition



3.3 Device Network

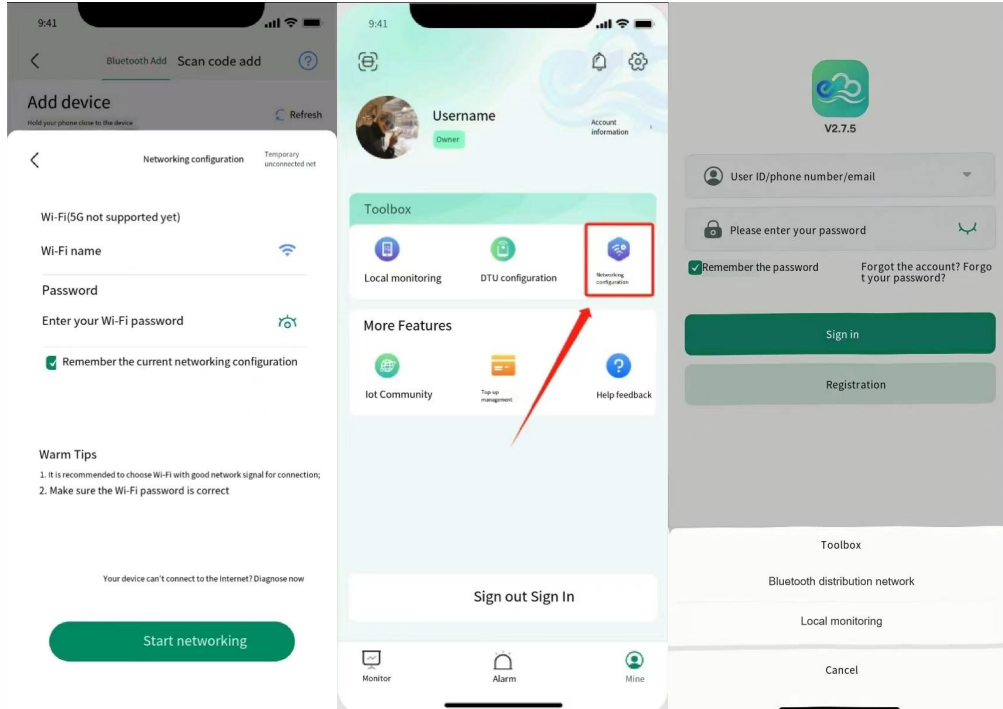
3.3.1 Distribution Network Entrance

Entrance 1: After adding the device through "Bluetooth Add", it will automatically enter the configuration network

Entrance 2: Log in to the app and click on "Network Configuration" on the "Me" page

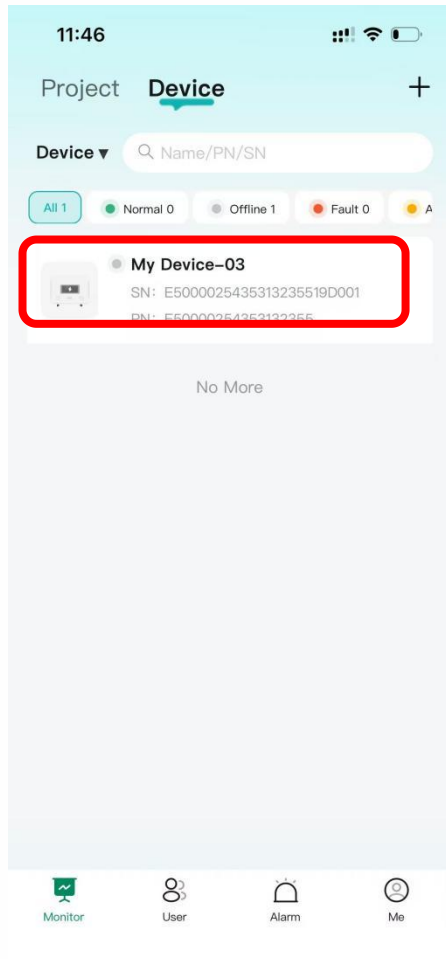
Entrance 3: Click on "Toolbox" on the APP login page and select "Bluetooth

Distribution Network



四、Device Monitor

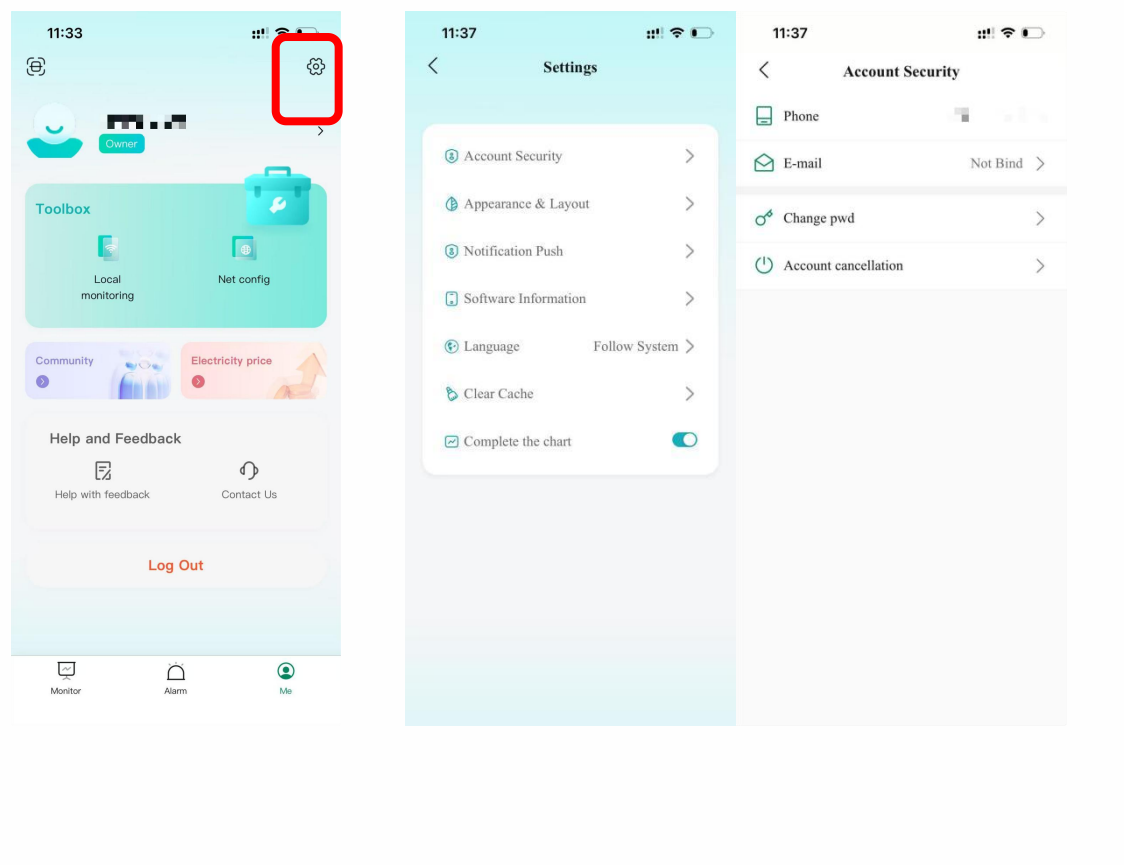
- 1) After adding the device, the corresponding device can be seen on the monitoring interface
- 2) Click to enter the device to see various information about the battery



五、My Account

5.1 Change password

1) Click on 'Me', click on the settings button in the upper right corner, enter the settings page, click on 'Account' and 'Security', then click on 'Change Login Password'. Follow the prompts to obtain the phone number/email verification code and complete the password change;



5.2 Log Out

1) Click on 'Me' and then click on the 'Log Out' button below to log out of your account

